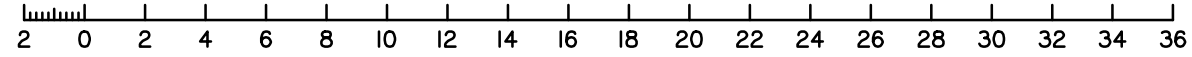


Scale 1:250 - Lengths are in Metres.

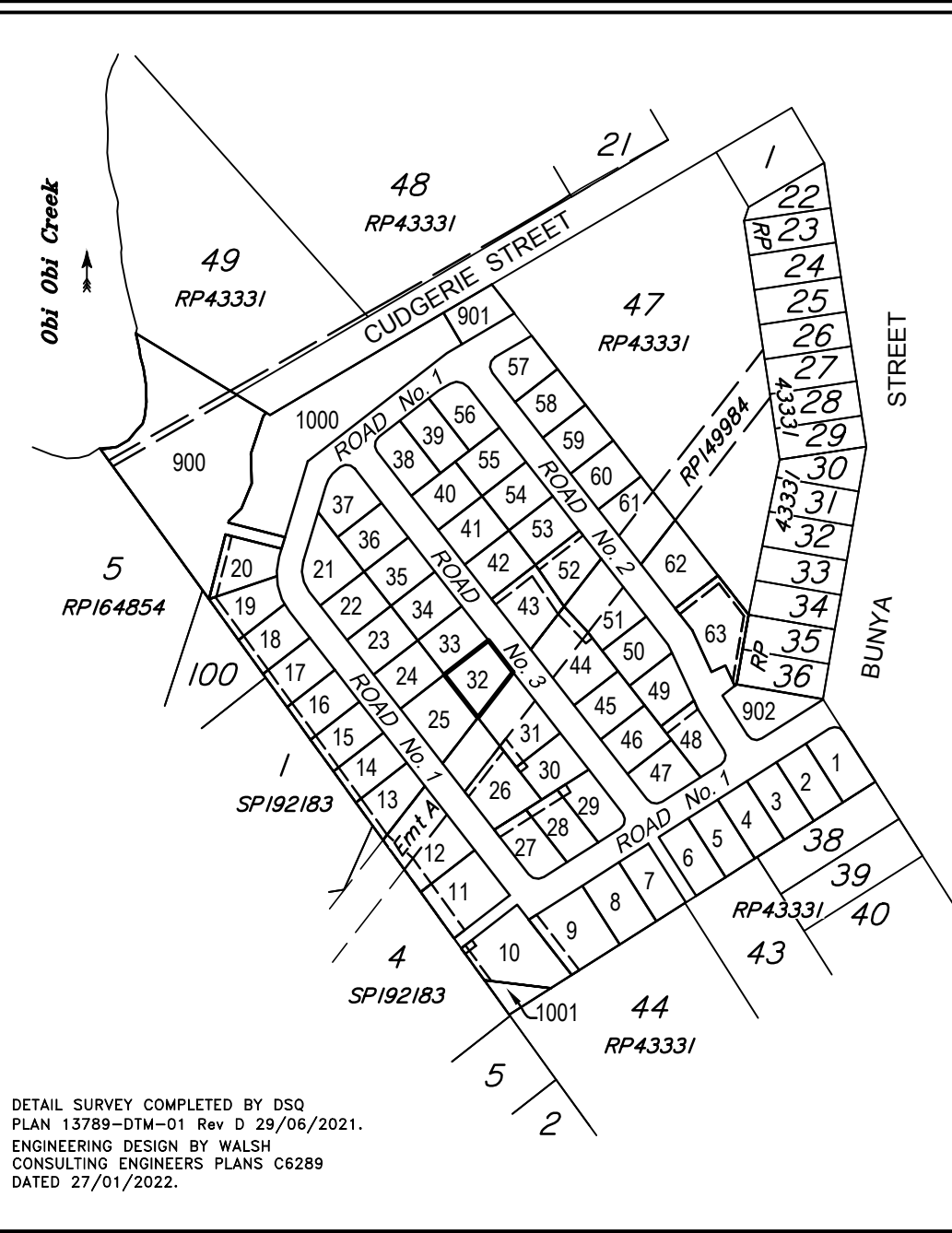


**DISCLOSURE PLAN**  
**FOR PROPOSED ALLOTMENT 32**  
 Dated 8th February 2022

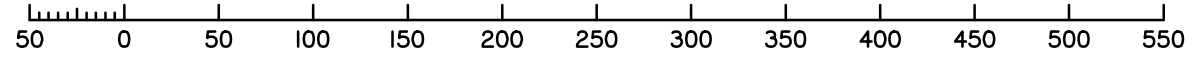
This plan shows details of proposed allotment 32 on the Proposal Plan BUN-005 Rev C dated 15th October 2021 lodged as part of a Subdivision Application with Sunshine Coast Regional Council, subject to conditions.

The area being proposed allotment 32 described as part of Lots 37, 45 & 46 on RP43331, and situated at Bunya Street, Maleny.

The allotment contains an area of 870 square metres, more or less.



Scale 1:4000 - Lengths are in Metres.



DETAIL SURVEY COMPLETED BY DSQ  
 PLAN 13789-DTM-01 Rev D 29/06/2021.  
 ENGINEERING DESIGN BY WALSH  
 CONSULTING ENGINEERS PLANS C6289  
 DATED 27/01/2022.

THE  
**ENCLAVE**  
*Maleny*

**Disclosure Plan**  
**BUNYA ST, MALENY**  
**PROPOSED LOT 32**

ALL FILL WITHIN ALLOTMENTS IS TO LEVEL 1 INSPECTION AND TESTING IN ACCORDANCE WITH AS3798-2007

- FILL AREAS SHOWN THUS
- CUT AREAS SHOWN THUS
- BUILDING EXCLUSION ZONE
- EDGE OF BATTER
- RETAINING WALL
- RETAINING WALL HEIGHT
- EXISTING SURFACE CONTOURS
- CUT HEIGHT
- FILL HEIGHT

**Note**  
 Contour interval is shown at 0.5 metres.

Revisions	Surveyed	Drawn	Checked	Passed	Date
A ORIGINAL PLAN	DSQ	JJ	AJP	AJP	08.02.22

**DSQ**  
**LAND SURVEYORS**  
 SUNSHINE COAST  
 PO Box 1073, Buddina QLD 4575 Ph: (07) 5437 8555  
 mail@dsqsurvey.com ABN: 91 615 043 251  
 www.dsqsurvey.com ACN: 615 043 251  
 WESTERN DOWNS

Signed   
 Cadastral Surveyor/Director  
 Date **8/02/2022**

Horiz. Datum MGA2020 Z56 Vert. Datum AHD  
 Origin PSM 132696 Origin PSM 132696  
 RL 417.192  
 Locality: MALENY  
 Local Government: SUNSHINE COAST REGIONAL COUNCIL

SHEET 1 OF 1 Scale **At A3 size**  
 COMPUTER FILE 13789 DIS 02 Rev A  
 DRAWING NUMBER **13789 DIS-32** REV. **A**

2022/02/09W: DSQ\_Data\Jobs Current\13789 RM Developments (Maleny)\Data Survey\Drafting\Disclosures\13789 DIS 02 Rev A.dwg