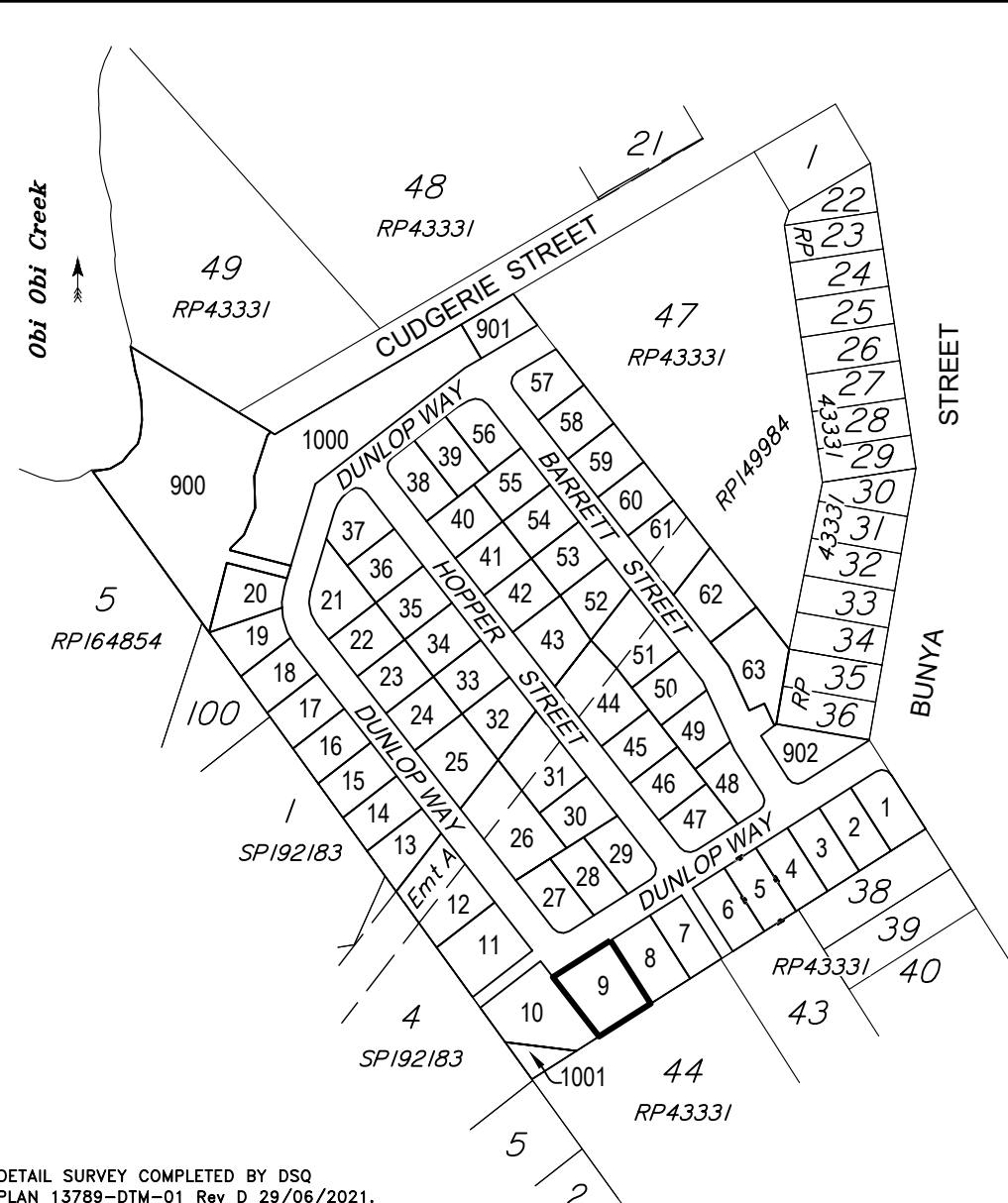


**DISCLOSURE PLAN
FOR PROPOSED ALLOTMENT 9**
Dated 15th July 2025

This plan shows details of proposed allotment 9 on the Proposal Plan BUN-005 Rev C dated 15th October 2021 lodged as part of a Subdivision Application with Sunshine Coast Regional Council, subject to conditions.

The area being proposed allotment 9 described as part of Lot 904 on SP354462, and situated at Bunya Street, Maleny.

The allotment contains an area of 1381 square metres, more or less.



DETAIL SURVEY COMPLETED BY DSQ
PLAN 13789-DTM-01 Rev D 29/06/2021.
ENGINEERING DESIGN BY WALSH
CONSULTING ENGINEERS PLANS C6289
DATED 12/06/2025.

Disclosure Plan
**BUNYA ST,
MALENY**
PROPOSED LOT 9

ALL FILL WITHIN ALLOTMENTS IS TO LEVEL 1 INSPECTION AND TESTING IN ACCORDANCE WITH AS3798-2007

- FILL AREAS SHOWN THUS
- CUT AREAS SHOWN THUS
- BUILDING EXCLUSION ZONE (BEZ)
- EDGE OF BATTER
- RETAINING WALL
- RETAINING WALL HEIGHT
- EXISTING SURFACE CONTOURS
- CUT HEIGHT
- FILL HEIGHT

Note
Contour interval is shown at 0.5 metres.

Revisions	Surveyed	Drawn	Checked	Passed	Date	
A	ORIGINAL PLAN	DSQ	JJ	AJP	AJP	15.07.25

DSQ
LAND SURVEYORS

SUNSHINE COAST
PO Box 1073, Buddina QLD 4575 Ph: (07) 5437 8555
mail@dsqsurvey.com ABN: 91 615 043 251
www.dsqsurvey.com ACN: 615 043 251
WESTERN DOWNS

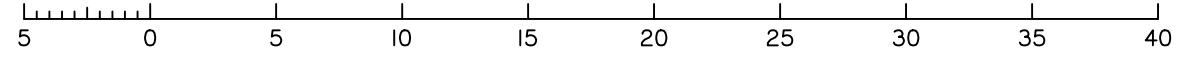
Signed
Cadastral Surveyor/Director
Date 15/07/2025

Horiz. Datum MGA2020 Z56 Vert. Datum AHD
Origin PSM 132696 Origin PSM 132696
RL 417.192

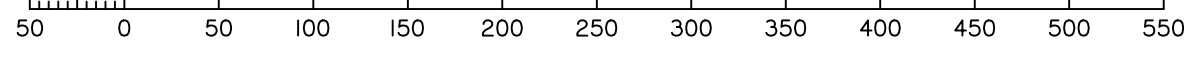
Locality: MALENY
Local Government: SUNSHINE COAST REGIONAL COUNCIL

SHEET 1 OF 1 Scale At A3 size
COMPUTER FILE 13789 DIS 02 Rev A
DRAWING NUMBER REV.
13789 DIS-09 A

Scale 1:300 - Lengths are in Metres.



Scale 1:4000 - Lengths are in Metres.



2025/07/19 W:\DSQ_Data\Jobs\Current\13789_RM_Developments\Maleny\13789_RM_Developments\13789 DIS 02 Rev A.dwg