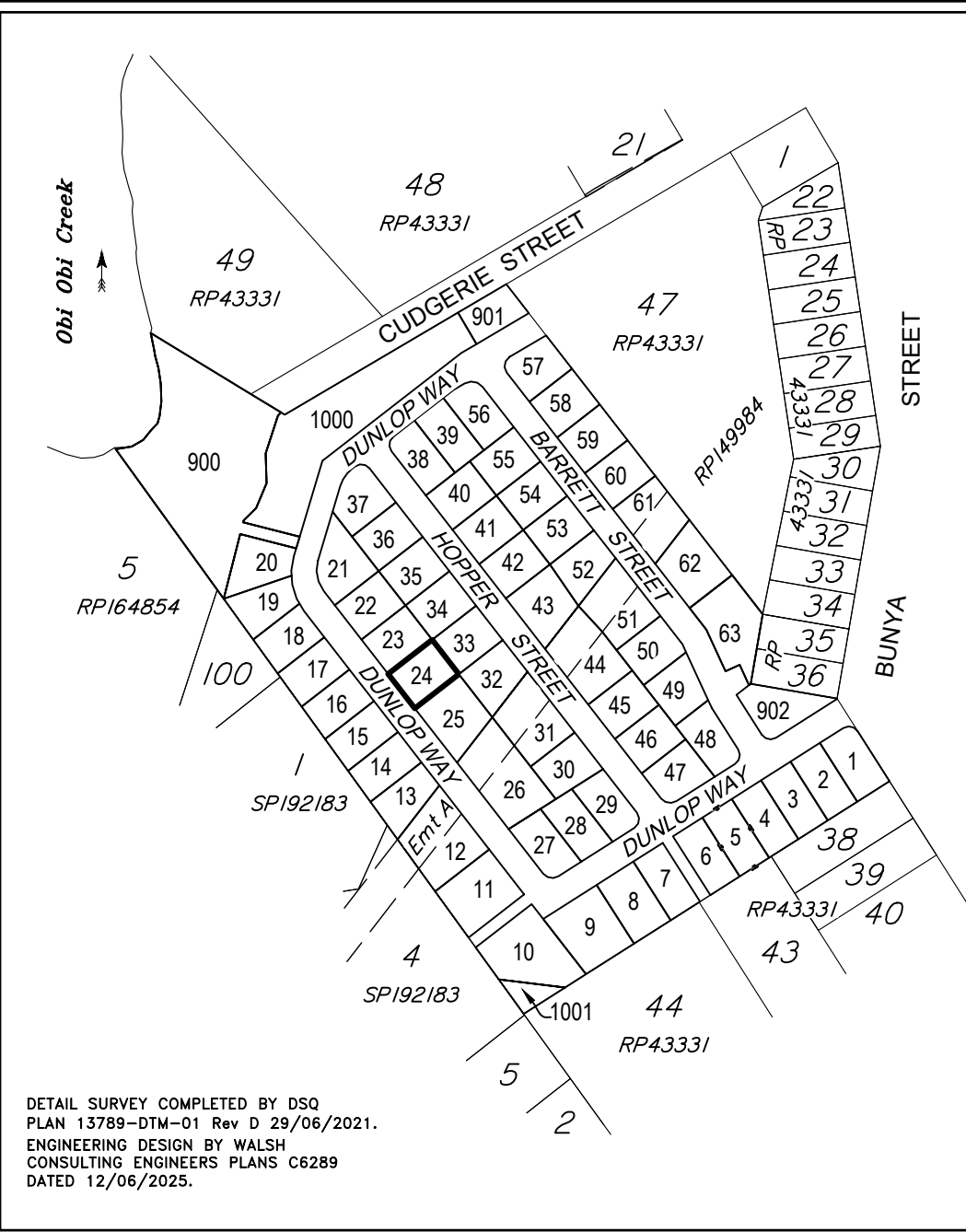


**DISCLOSURE PLAN  
FOR PROPOSED ALLOTMENT 24**  
Dated 15th July 2025

This plan shows details of proposed allotment 24 on the Proposal Plan BUN-005 Rev C dated 15th October 2021 lodged as part of a Subdivision Application with Sunshine Coast Regional Council, subject to conditions.

The area being proposed allotment 24 described as part of Lot 904 on SP354462, and situated at Bunya Street, Maleny.

The allotment contains an area of 800 square metres, more or less.

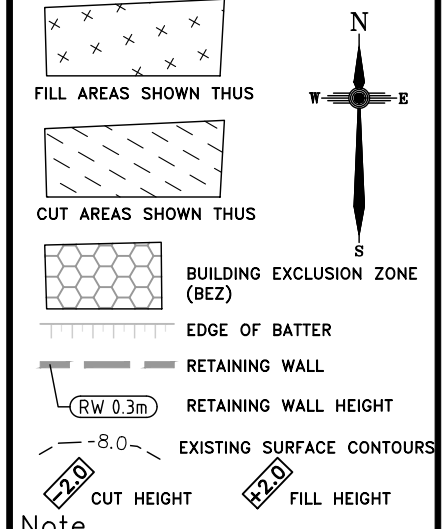


DETAIL SURVEY COMPLETED BY DSQ  
PLAN 13789-DTM-01 Rev D 29/06/2021.  
ENGINEERING DESIGN BY WALSH  
CONSULTING ENGINEERS PLANS C6289  
DATED 12/06/2025.

THE  
**ENCLAVE**  
*Maleny*

**Disclosure Plan**  
**BUNYA ST, MALENY**  
**PROPOSED LOT 24**

ALL FILL WITHIN ALLOTMENTS IS TO LEVEL 1 INSPECTION AND TESTING IN ACCORDANCE WITH AS3798-2007




**Note**  
Contour interval is shown at 0.5 metres.

Revisions	Surveyed	Drawn	Checked	Passed	Date
A ORIGINAL PLAN	DSQ	JJ	AJP	AJP	15.07.25

**DSQ**  
**LAND SURVEYORS**

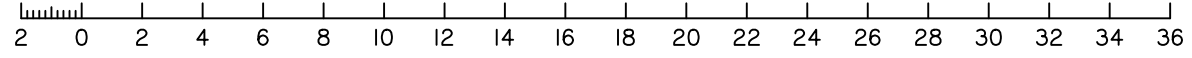
SUNSHINE COAST  
PO Box 1073, Buddina QLD 4575 Ph: (07) 5437 8555  
mail@dsqsurvey.com ABN: 91 615 043 251  
www.dsqsurvey.com ACN: 615 043 251  
WESTERN DOWNS

Signed   
Cadastral Surveyor/Director  
Date 15/07/2025

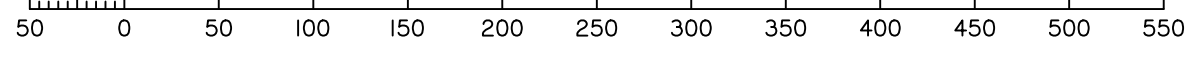
Horiz. Datum MGA2020 Z56 Vert. Datum AHD  
Origin PSM 132696 Origin PSM 132696  
RL 417.192  
Locality: MALENY  
Local Government: SUNSHINE COAST REGIONAL COUNCIL

SHEET 1 OF 1 Scale At A3 size  
COMPUTER FILE 13789 DIS 02 Rev A  
DRAWING NUMBER REV.  
**13789 DIS-24 A**

Scale 1:250 - Lengths are in Metres.



Scale 1:4000 - Lengths are in Metres.



2025/07/19 W:\DSQ\_Data\Jobs Current\13789 RM Developments (Maleny)\Data Survey\Drafting\Disclosures\13789 DIS 02 Rev A.dwg