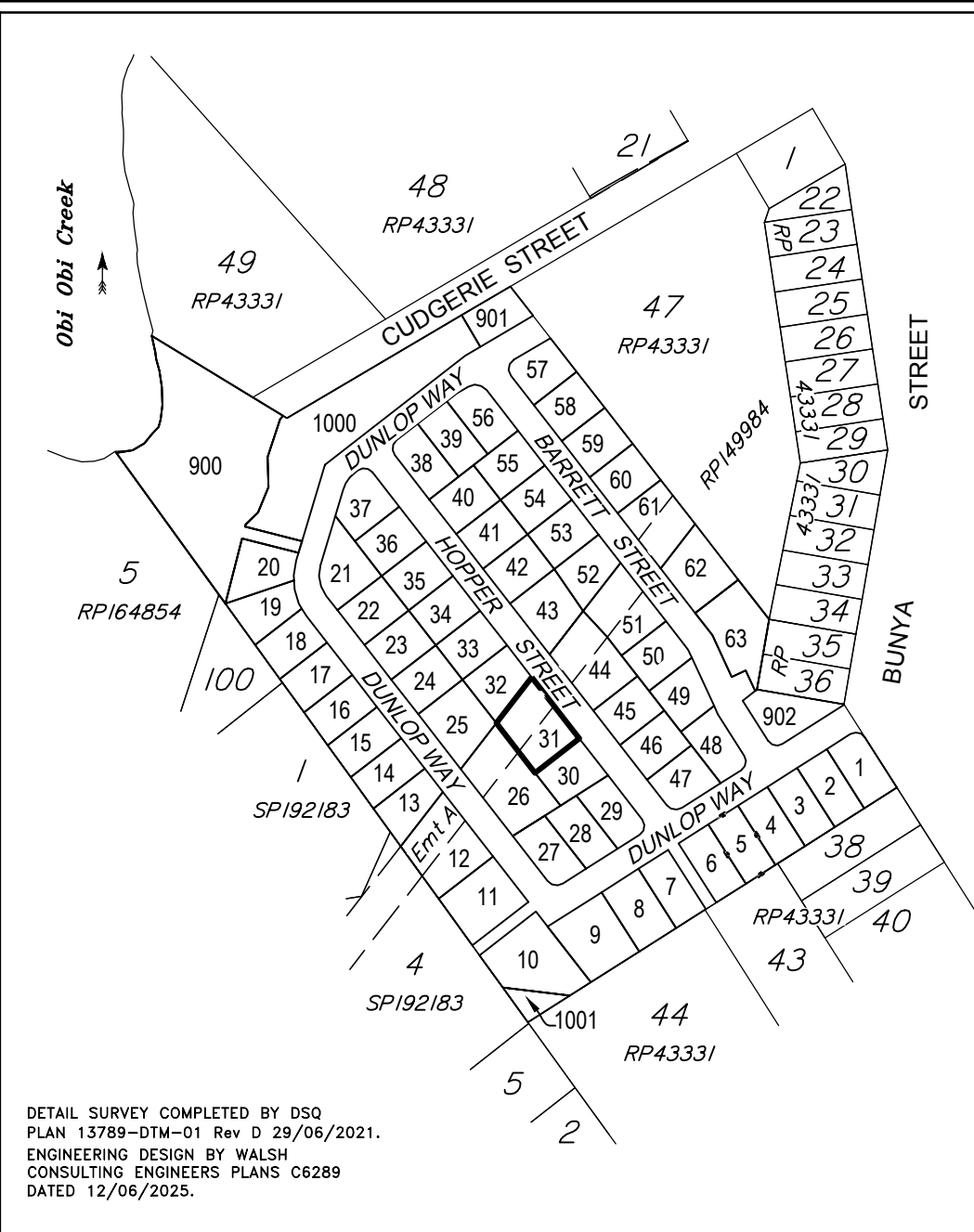


**DISCLOSURE PLAN
FOR PROPOSED ALLOTMENT 31
Dated 15th July 2025**

This plan shows details of proposed allotment 31 on the Proposal Plan BUN-005 Rev C dated 15th October 2021 lodged as part of a Subdivision Application with Sunshine Coast Regional Council, subject to conditions.

The area being proposed allotment 31 described as part of Lot 904 on SP354462, and situated at Bunya Street, Maleny.

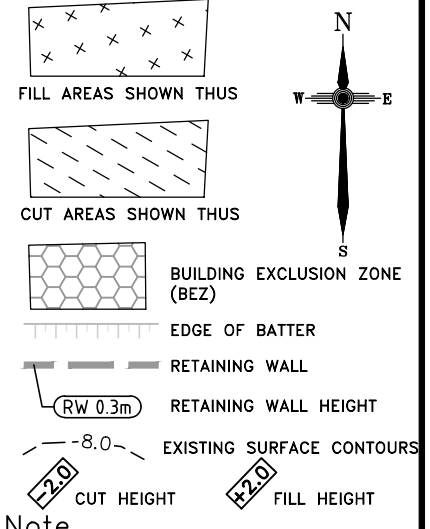
The allotment contains an area of 1281 square metres, more or less.



DETAIL SURVEY COMPLETED BY DSQ
PLAN 13789-DTM-01 Rev D 29/06/2021.
ENGINEERING DESIGN BY WALSH
CONSULTING ENGINEERS PLANS C6289
DATED 12/06/2025.

**Disclosure
Plan**
**BUNYA ST,
MALENY**
PROPOSED LOT 31

ALL FILL WITHIN ALLOTMENTS IS TO LEVEL 1 INSPECTION AND TESTING IN ACCORDANCE WITH AS3798-2007



Note
Contour interval is shown at 0.5 metres.

Revisions	Surveyed	Drawn	Checked	Passed	Date
B Lot 31 Elec	DSQ	JJ	AJP	AJP	25.07.25
A ORIGINAL PLAN	DSQ	JJ	AJP	AJP	15.07.25

DSQ
LAND SURVEYORS

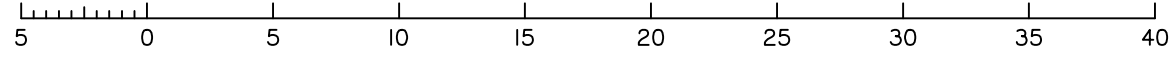
SUNSHINE COAST
PO Box 1073, Buddina QLD 4575 Ph: (07) 5437 8555
mail@dsqsurvey.com ABN: 91 615 043 251
www.dsqsurvey.com ACN: 615 043 251
WESTERN DOWNS

Signed
Cadastral Surveyor/Director
Date 15/07/2025

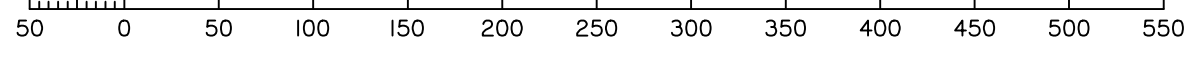
Horiz. Datum MGA2020 Z56 Vert. Datum AHD
Origin PSM 132696 Origin PSM 132696
RL 417.192
Locality: MALENY
Local Government: SUNSHINE COAST REGIONAL COUNCIL

SHEET 1 OF 1 Scale **At A3 size**
COMPUTER FILE 13789 DIS 02 Rev A
DRAWING NUMBER **13789 DIS-31** REV. **B**

Scale 1:300 - Lengths are in Metres.



Scale 1:4000 - Lengths are in Metres.



2025/07/24W: \DSQ_Data\Jobs\Current\13789_RM_Developments\Maleny\13789_RM_Developments\13789 DIS 02 Rev A.dwg